

GOODYEAR[®]

TPMS HEAVY DUTY



13:37

Machine details

CUSTOMER XYZ 17.07.2020 10:19:43

A >

Operating hours ≈ 268 h >

No labels

Pressure 1 Temperature

| | | |
|-----|-----|-----|
| 4.5 | 5.5 | 5.5 |
| 1 | 2 | 3 |
| 4.5 | 5.5 | 1.8 |
| 4.5 | 5.5 | 5.5 |

Recommended Cold Pressure

Temperature Compensated Pressure

Your challenges

Companies operating off-the-road machines face a series of challenges:



Downtime

Unplanned downtime is costly and inefficient.



Breakdown

Tire related breakdowns can generate high costs and impact operational output.



Machine Repair

Repair costs to machines due to tire-related incidents.



Tire Performance

Tire pressure can impact performance and overall durability.



Fuel

Under-inflated tires can lead to higher fuel consumption and CO₂ emissions.



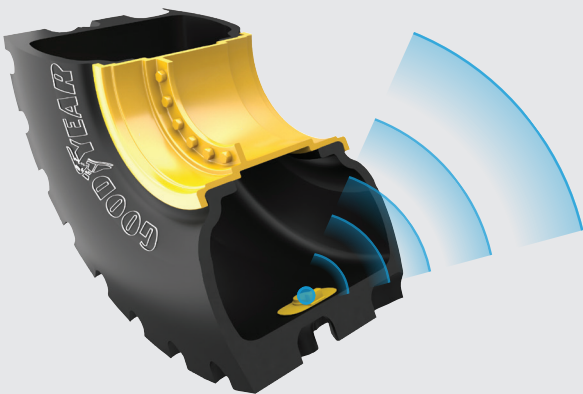
Safety

Improper tire maintenance could compromise operator safety.

Introducing... TPMS Heavy Duty

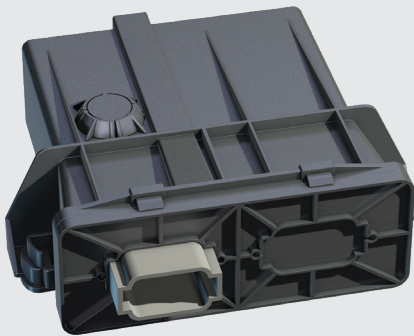
The Goodyear TPMS Heavy Duty solution can help our customers make proactive and efficient maintenance decisions aimed at avoiding unplanned tire-related incidents.

How it works:



Tire-fitted sensor:

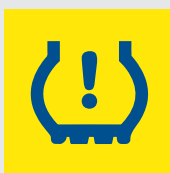
Collects and monitors tire pressure and temperature data in real time to detect pressure irregularities, air leaks and mechanical issues. It fits all types of OTR tires. The sensor can be removed and re-installed when the tire is changed.



On-board router and GPS:

Records data continuously and sends alerts instantly to Goodyear's web and mobile applications. Suitable for most OTR applications. Track your machines and monitor your fleet through GPS technology. Also get detailed information about your operations.

Features



TIRE PRESSURE



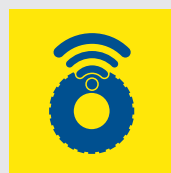
TIRE TEMPERATURE



SLOW LEAK IDENTIFICATION



GPS LOCATION



WHEEL POSITION



WORKING IN PARKING MODE



GEOFENCE

A powerful, predictive solution

The Goodyear TPMS Heavy Duty solution is specifically designed to deliver up-to-the-minute information regarding the condition of a fleet's tires. With applications designed for both fleet managers and operators, Goodyear helps ensure the right actions can be taken, without delay.



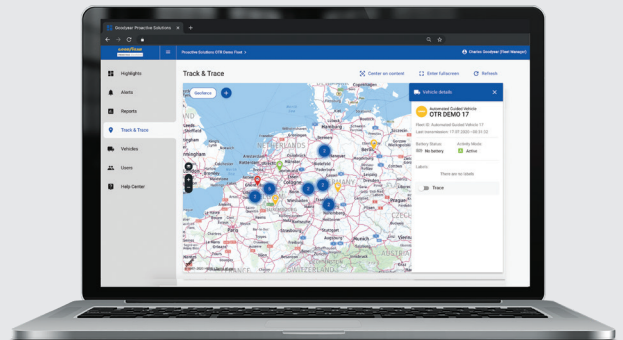
The Goodyear Fleet Manager App provides:

- One dashboard providing an overview of all machines
- Live view of your fleet's tires and live machine details
- Alerts when a tire needs urgent maintenance or replacing
- Track your machines and monitor your fleet with Geofences
- Instant information about operational statistics



The Goodyear Fleet Manager Web provides:

- Customizable Web Platform
- One dashboard providing you with a complete overview of your fleet's condition
- User-configurable reporting and new alert dashboard allowing you to manage your fleet your way
- Track your machines and coordinate your daily business
- Monitor your fleet by defining geographical areas (Geofences)



Benefits of Goodyear TPMS Heavy Duty

Goodyear TPMS Heavy Duty can help:



Reduce machine downtime



Improve tire performance and durability



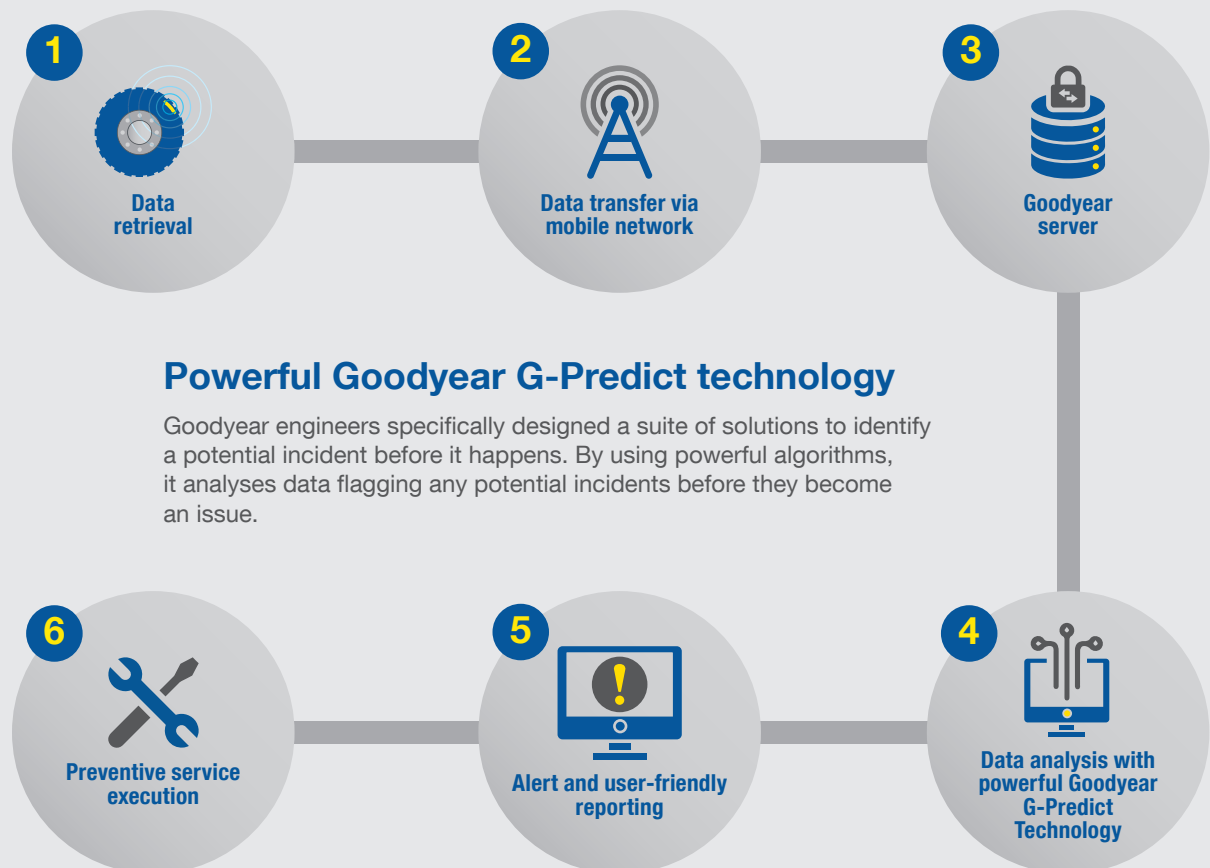
Reduce fuel consumption and CO2 emissions



Optimize maintenance costs

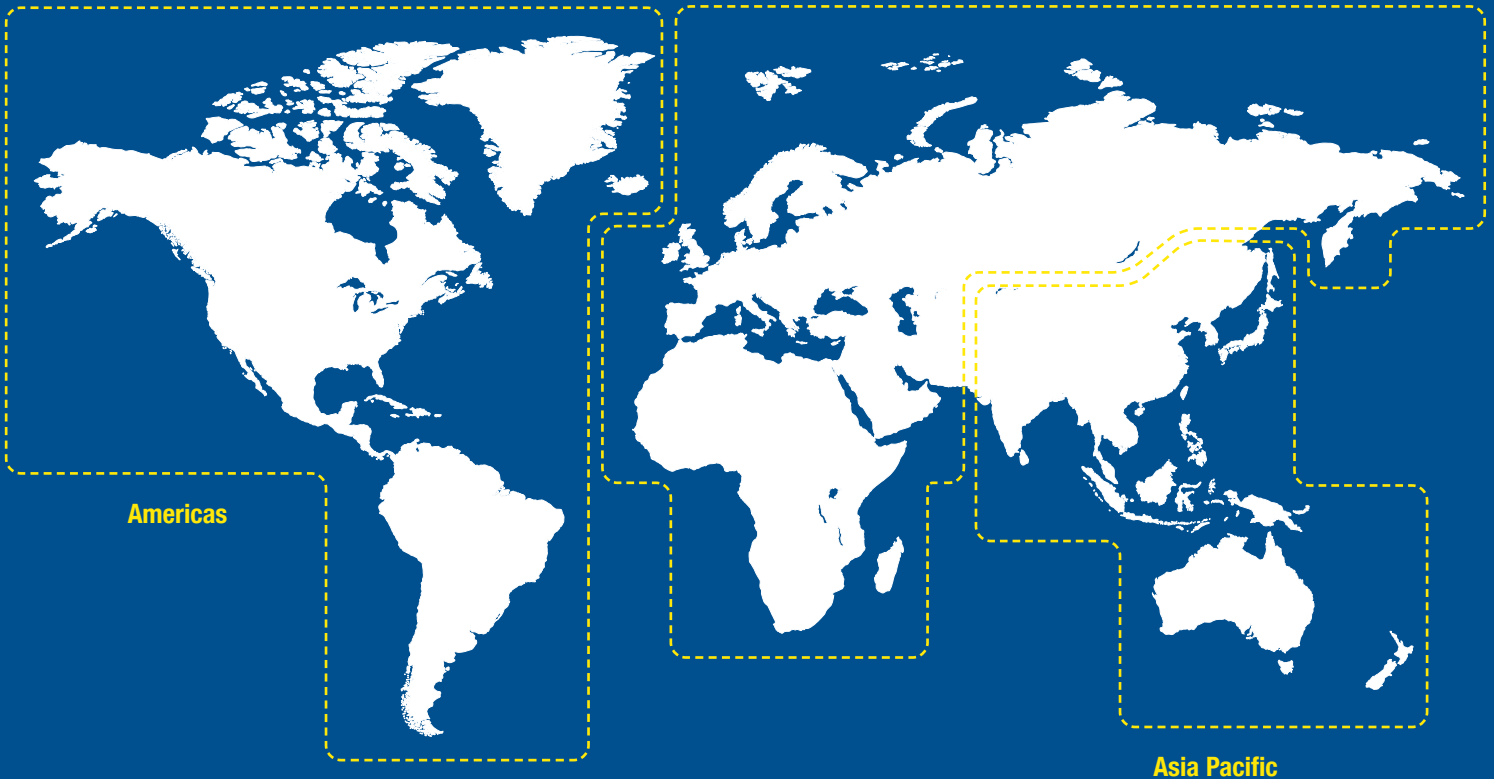


Improve safety



Goodyear OTR, a global business to support your growth

Europe Middle East and Africa



Americas

Asia Pacific

Americas:

The Goodyear Tire & Rubber Co.
200 Innovation Way
Akron, Ohio 44316-0001
United States
Phone: +1 330 796 2121

EMEA:

Goodyear Dunlop Tires Operations S.A.
Avenue Gordon Smith
7750 Colmar Berg
Luxembourg
Phone: +352 81991

Asia Pacific:

Goodyear Tire Management (Shanghai) Co.,Ltd.
989 Changle Rd, Xuhui Qu
Shanghai Shi, China
Phone: +61 2 9768 6000

TOTAL MOBILITY



Trusted Products

Specialized OTR innovations to help lower operating costs.



Reliable Services

Expert worldwide support to help you optimize operations.



Tire Management Solutions

Powerful management tools to help you improve productivity.

goodyearotr.com

GOODYEAR
OFF-THE-ROAD